



Lot 11-43B Wyman Rd - New Ipswich

DRAWING SHEET INDEX

COVER SHEET:

CS-1 Cover Sheet

SITE:

(Not Required)

ARCHITECTURAL:

A-1 First Floor
 A-2 Exterior Elevations
 A-3 Exterior Elevations
 A-4 Building Sections and Details
 S-1 Basement/Foundation Plan

**FINISHED LIVING AREA
 1344 SF**

PAGE:

CS-1

SCALE:

NONE

REVISIONS:

PROJECT:
 Wyman Rd
 Lot 11-43B
 New Ipswich, NH 03071

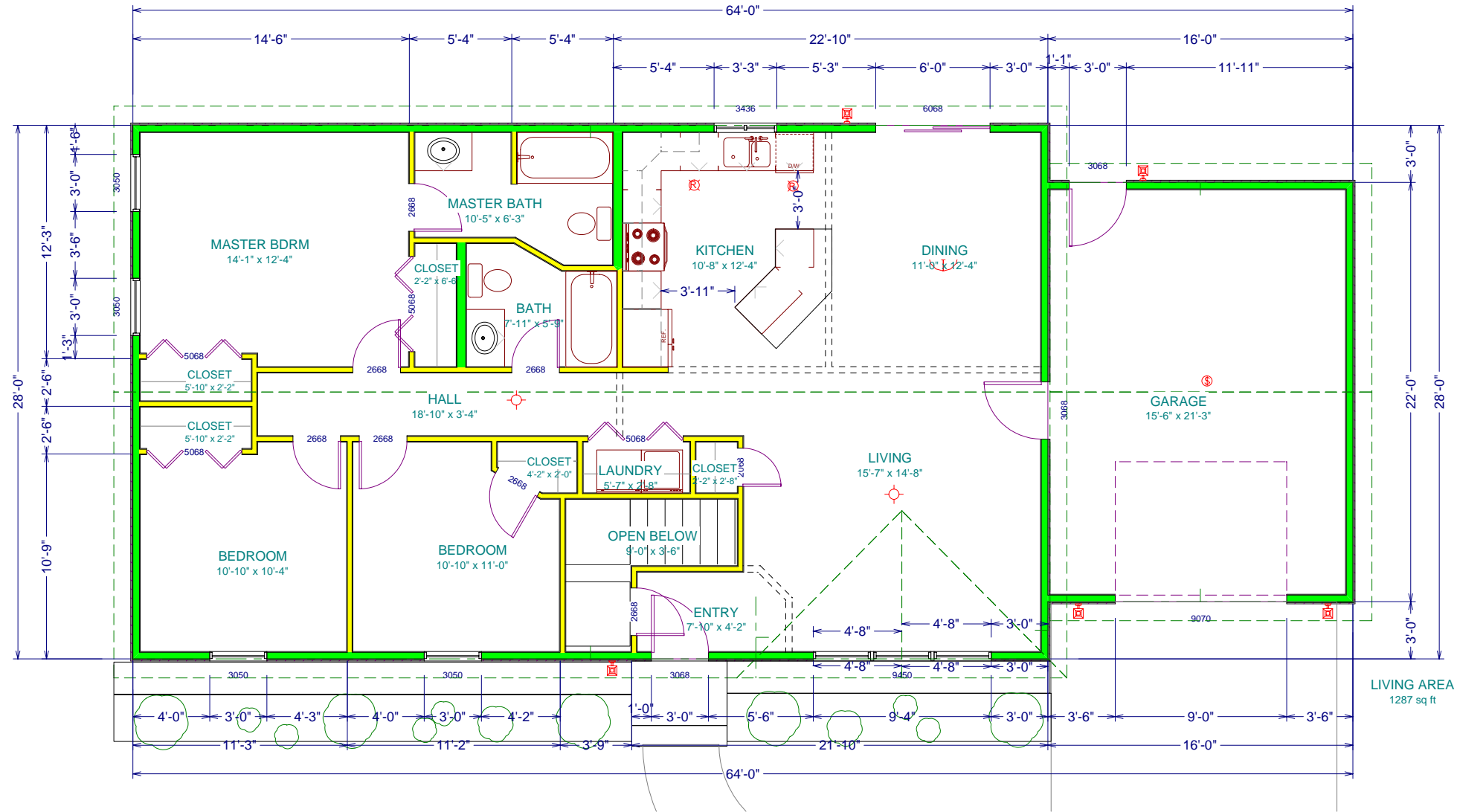
DESIGNER:
 Amanda Lehtonen
 San-Ken Homes, Inc.
 New Ipswich, NH 03071
 www.san-ken.com
 (603)878-2856

© All plans sold by San-Ken Homes, Inc. are the exclusive property of San-Ken Homes, Inc. and reproduction in whole or in part is strictly prohibited. All plans are provided as-is and San-Ken Homes, Inc. disclaims all warranties, express or implied, including merchantability or fitness of purpose. Plans may not be returned for credit or refund under any circumstances. San-Ken Homes, Inc. is not responsible or liable for incidental, special, consequential, or indirect damages of any kind, including, but not limited to, loss of anticipated profits, business opportunity, or other economic loss arising out of the use of the plans even if San-Ken Homes, Inc. has been advised of the possibility of such damage. We are not licensed architects or professional engineers and you are encouraged to consult with a licensed architect or professional engineer to ensure that these plans comply with your local applicable building codes. In the event any liability is imposed on San-Ken Homes, Inc., San-Ken Homes, Inc.'s liability to you or any third party shall not exceed the price paid for the plans.

These drawings are the proprietary work product and property of San-Ken Homes, Inc. developed for the exclusive use of San-Ken Homes, Inc. use of these drawings and concepts contained therein without the written permission of San-Ken Homes, Inc. is prohibited and may subject you to a claim for damages not to exceed the price of the plan.

These plans are drawn to comply with customers specifications and any changes made on them after prints are made will be done at the customers expense and responsibility. The customer shall verify all dimensions and specifications prior to construction.

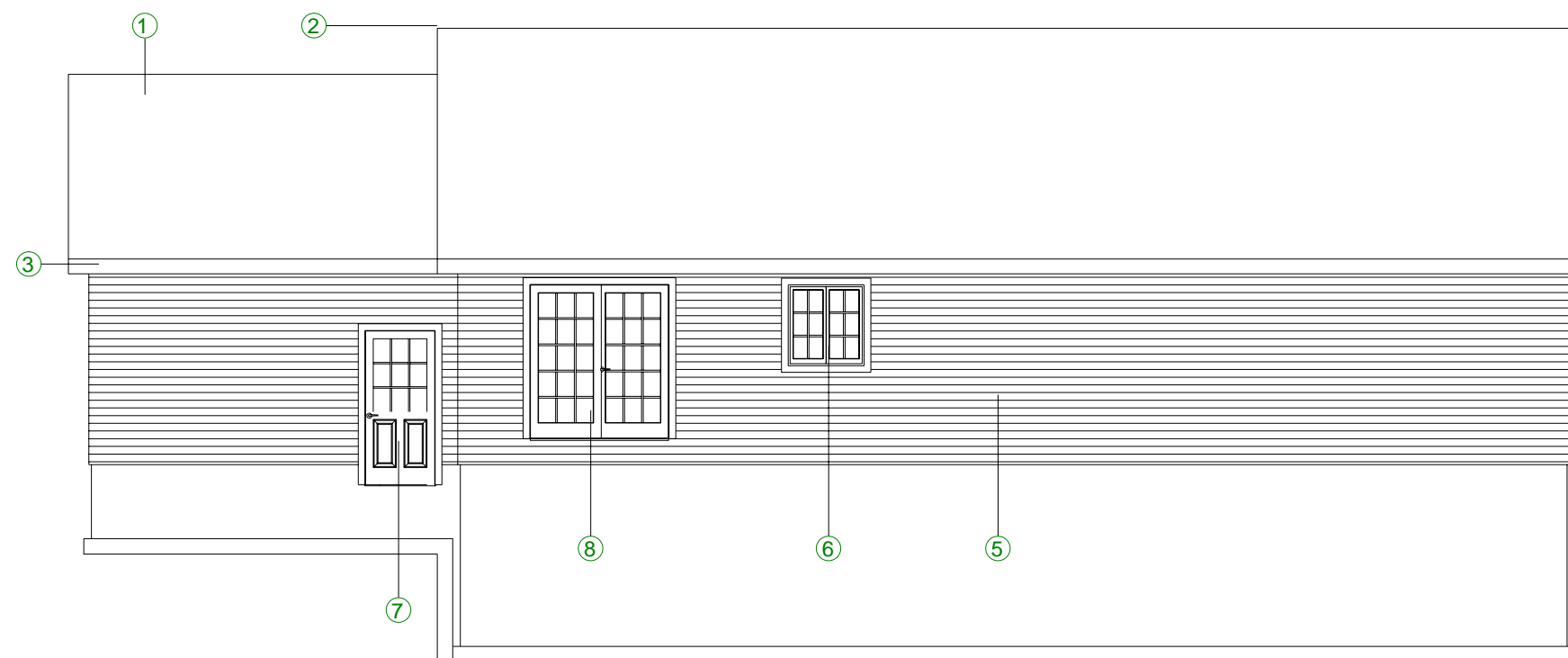
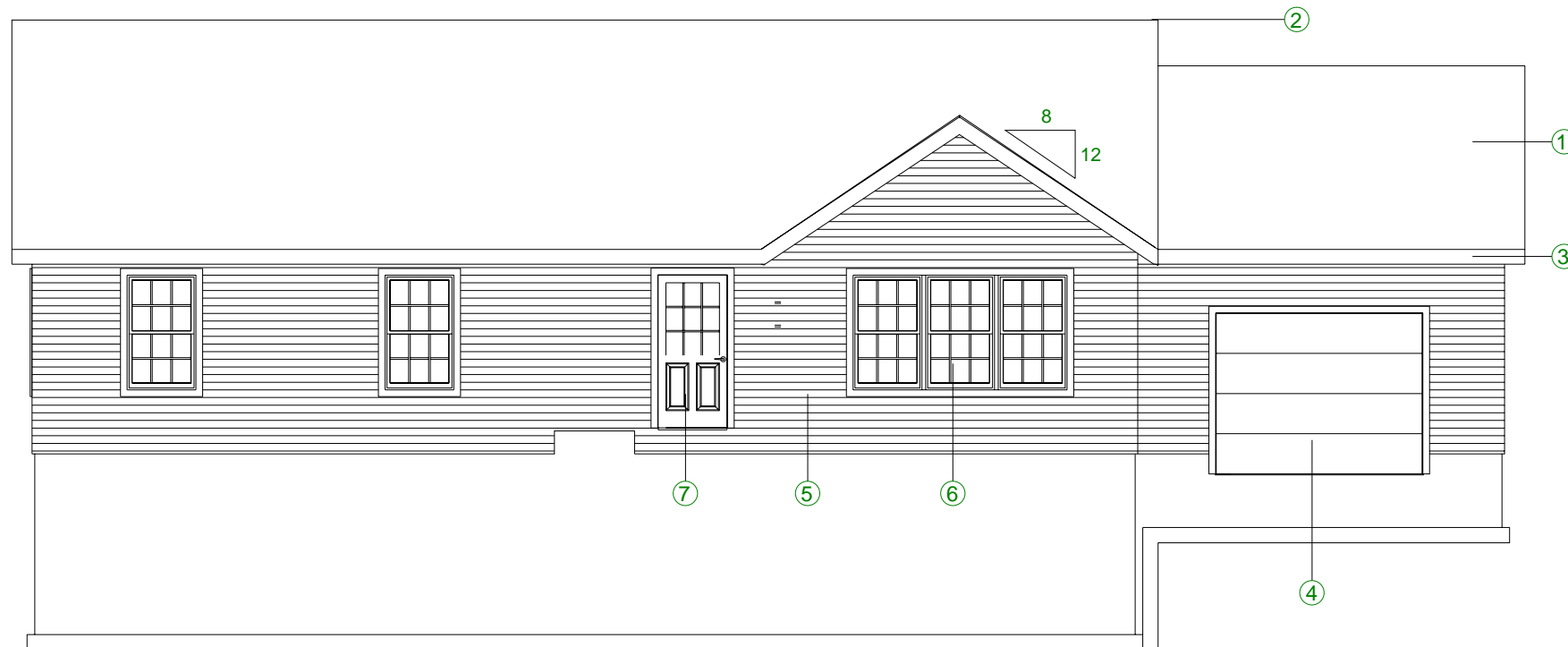




REVISIONS:

PROJECT:
Wyman Rd
Lot 11-43B
New Ipswich, NH 03071

DESIGNER:
Amanda Lehtonen
San-Ken Homes, Inc.
New Ipswich, NH 03071
www.san-ken.com
(603)878-2856



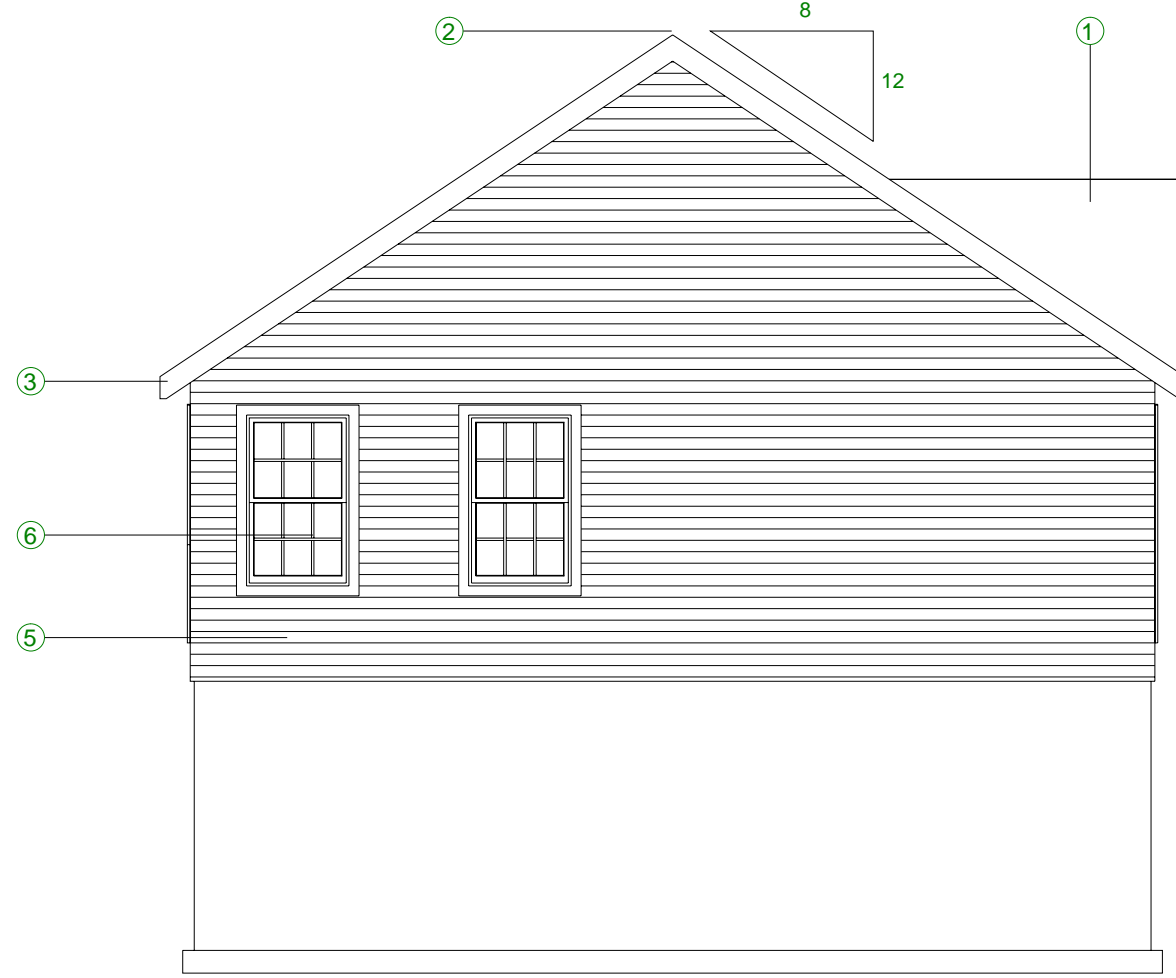
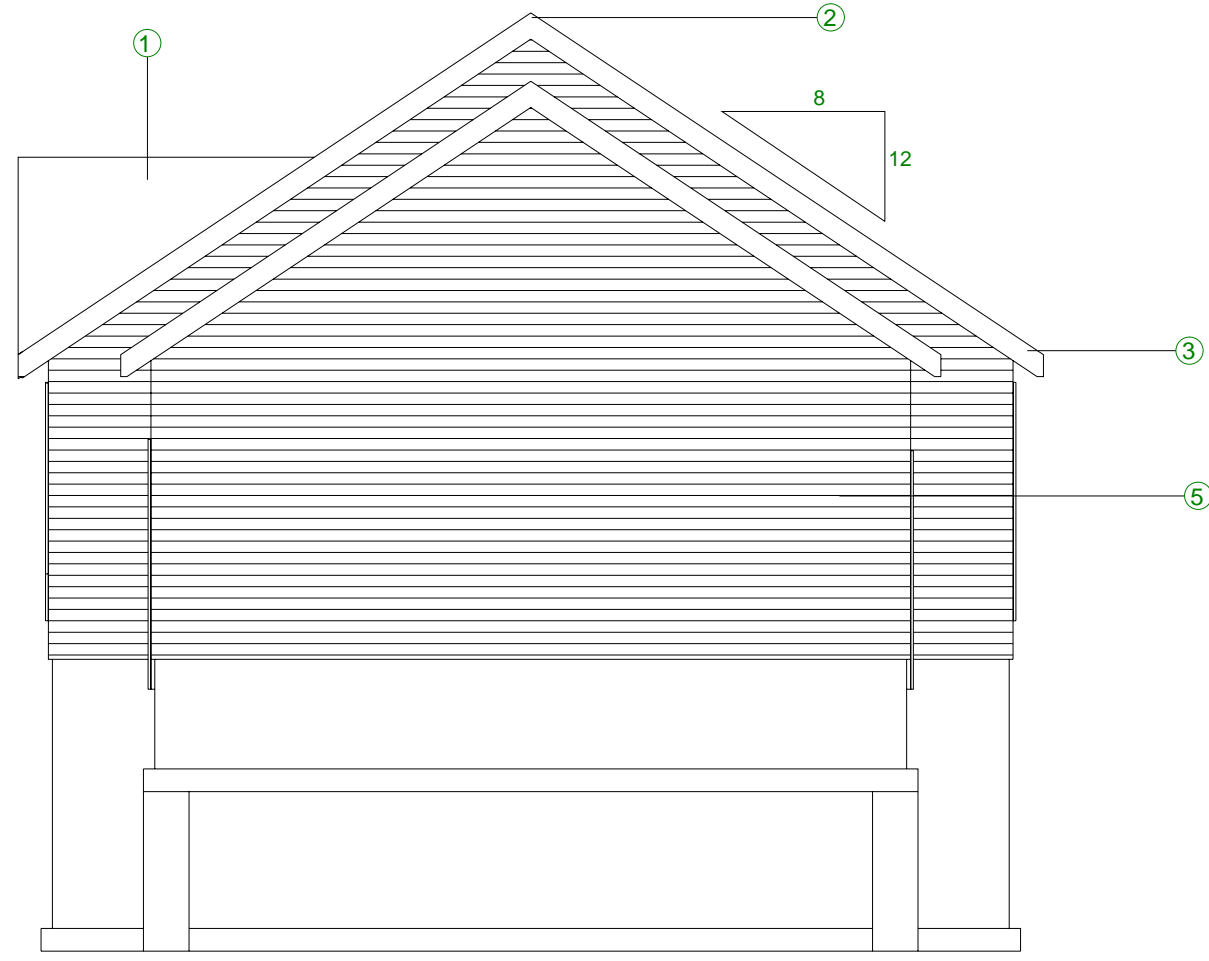
MATERIAL LEGEND

- ① ASPHALT SHINGLES
- ② CONTINUES RIDGE VENT W/ ASPHALT SHINGLE CAP
- ③ BENT METAL (ALUMINUM) DRIPEDGE, FASCIA & TRIM - COLOR WHITE
- ④ METAL GARAGE DOOR
- ⑤ VINYL SIDING & CORNER TRIM
- ⑥ VINYL WINDOWS (TILT-WASH) W/ ARGON INSULATED GLASS, GRILLES AND SCREENS (SEE WINDOW SCHEDULE FOR SIZES AND TYPES)
- ⑦ PREHUNG, FIBERGLASS INSULATED DOOR
- ⑧ GLASS SLIDER

REVISIONS:

PROJECT:
 Wymann Rd
 Lot 11-43B
 New Ipswich, NH 03071

DESIGNER:
 Amanda Lehtonen
 San-Ken Homes, Inc.
 New Ipswich, NH 03071
 www.san-ken.com
 (603)878-2856



REVISIONS:

PROJECT:
 Wymann Rd
 Lot 11-43B
 New Ipswich, NH 03071

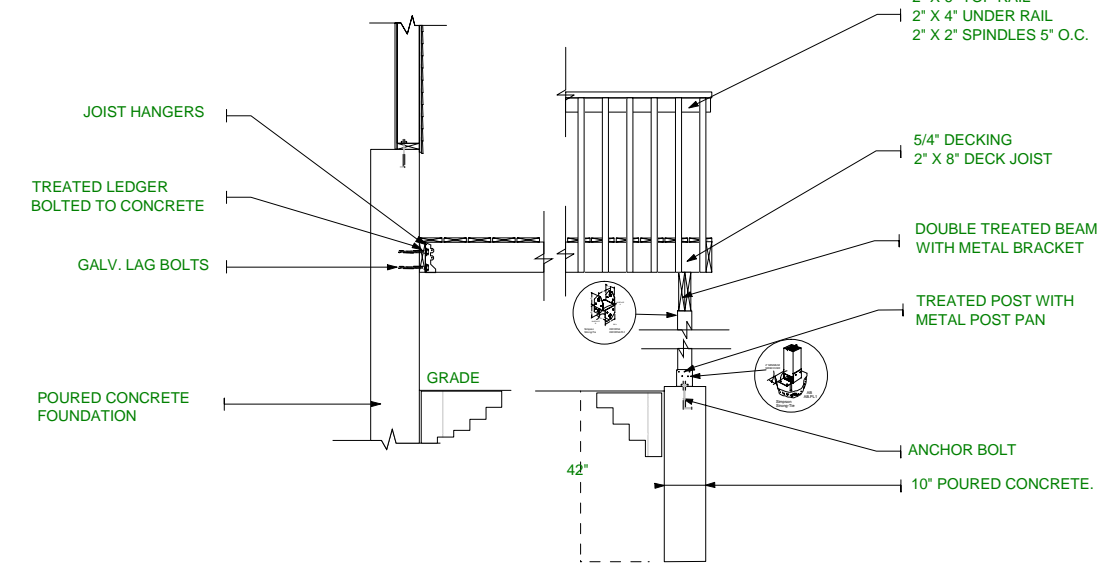
DESIGNER:
 Amanda Lehtonen
 San-Ken Homes, Inc.
 New Ipswich, NH 03071
 www.san-ken.com
 (603)878-2856

SCALE:
NOT TO SCALE

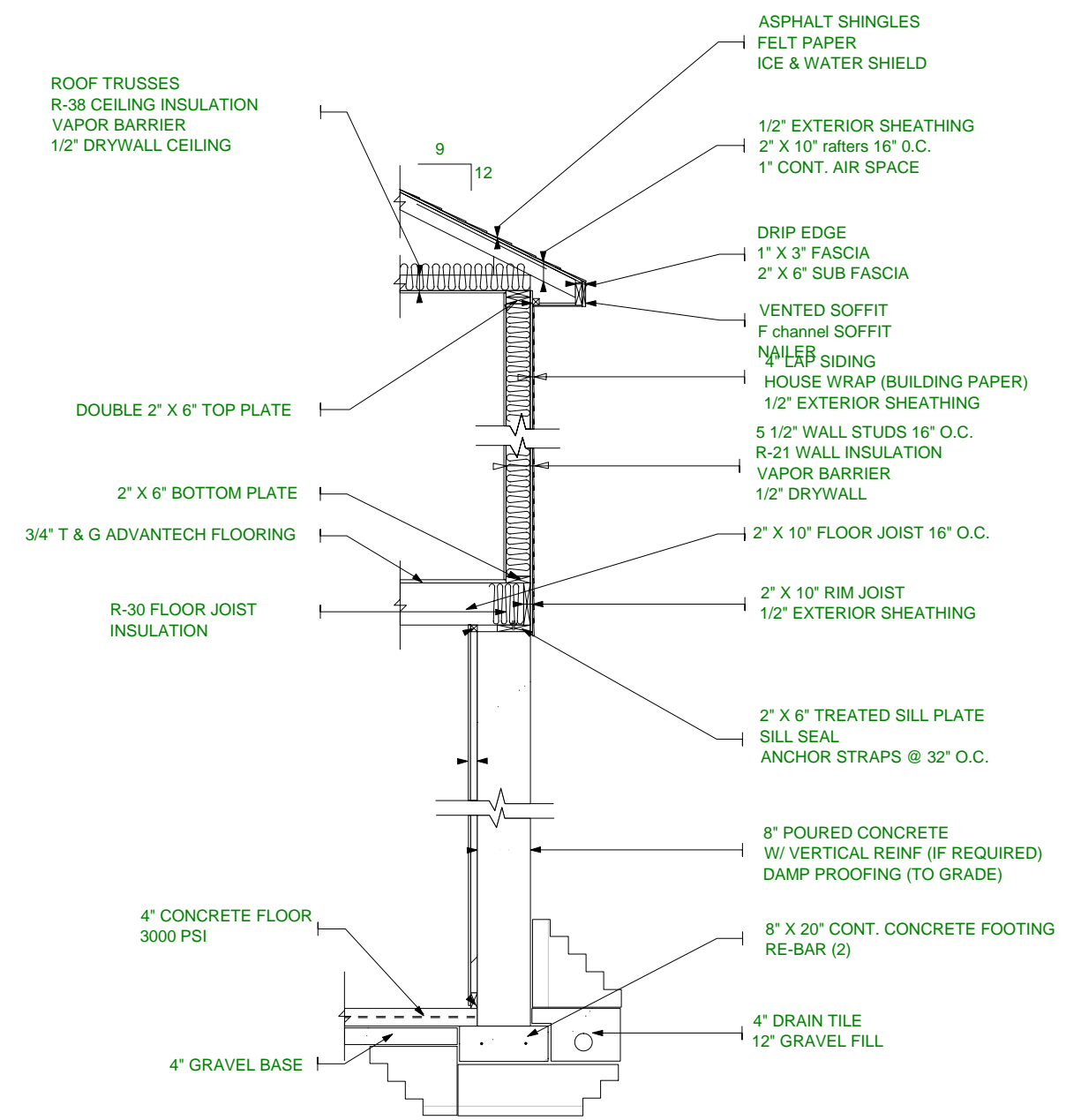
REVISIONS:

PROJECT:
Wyman Rd
Lot 11-43B
New Ipswich, NH 03071

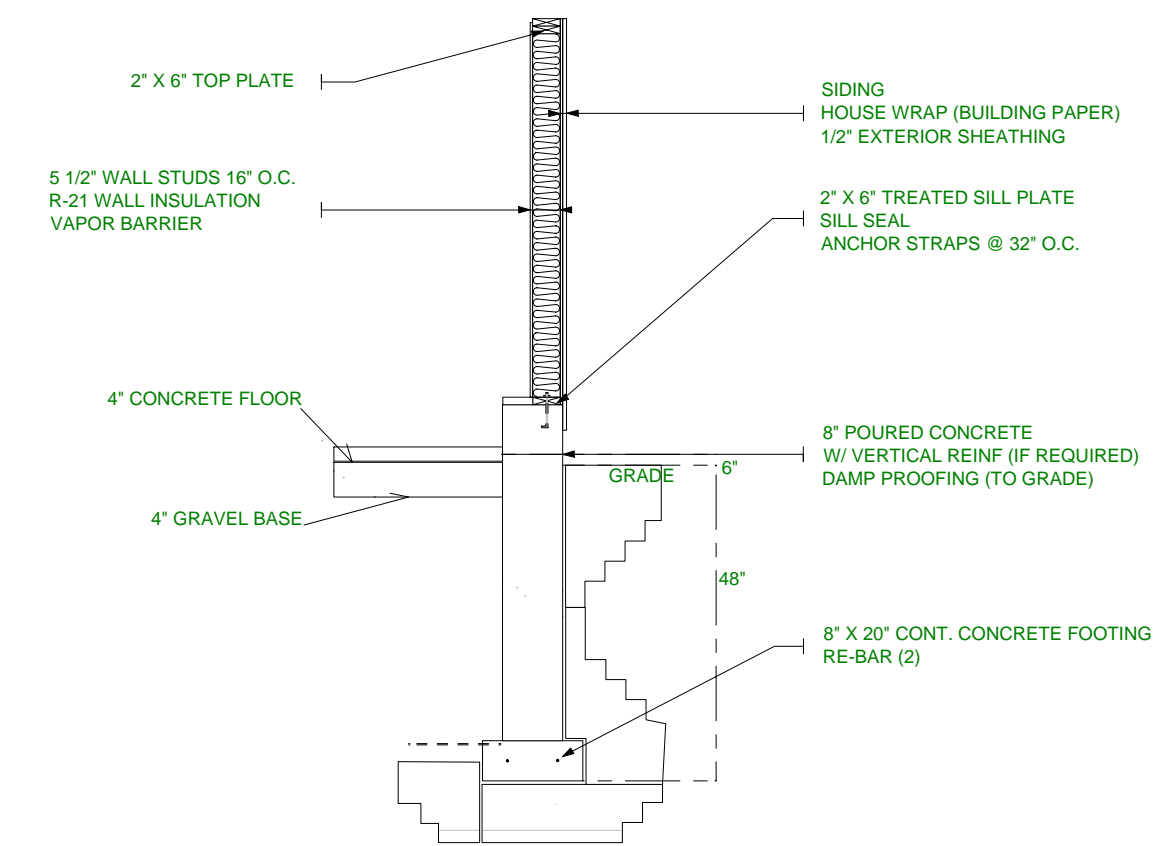
DESIGNER:
Amanda Lehtonen
San-Ken Homes, Inc.
New Ipswich, NH 03071
www.san-ken.com
(603)878-2856



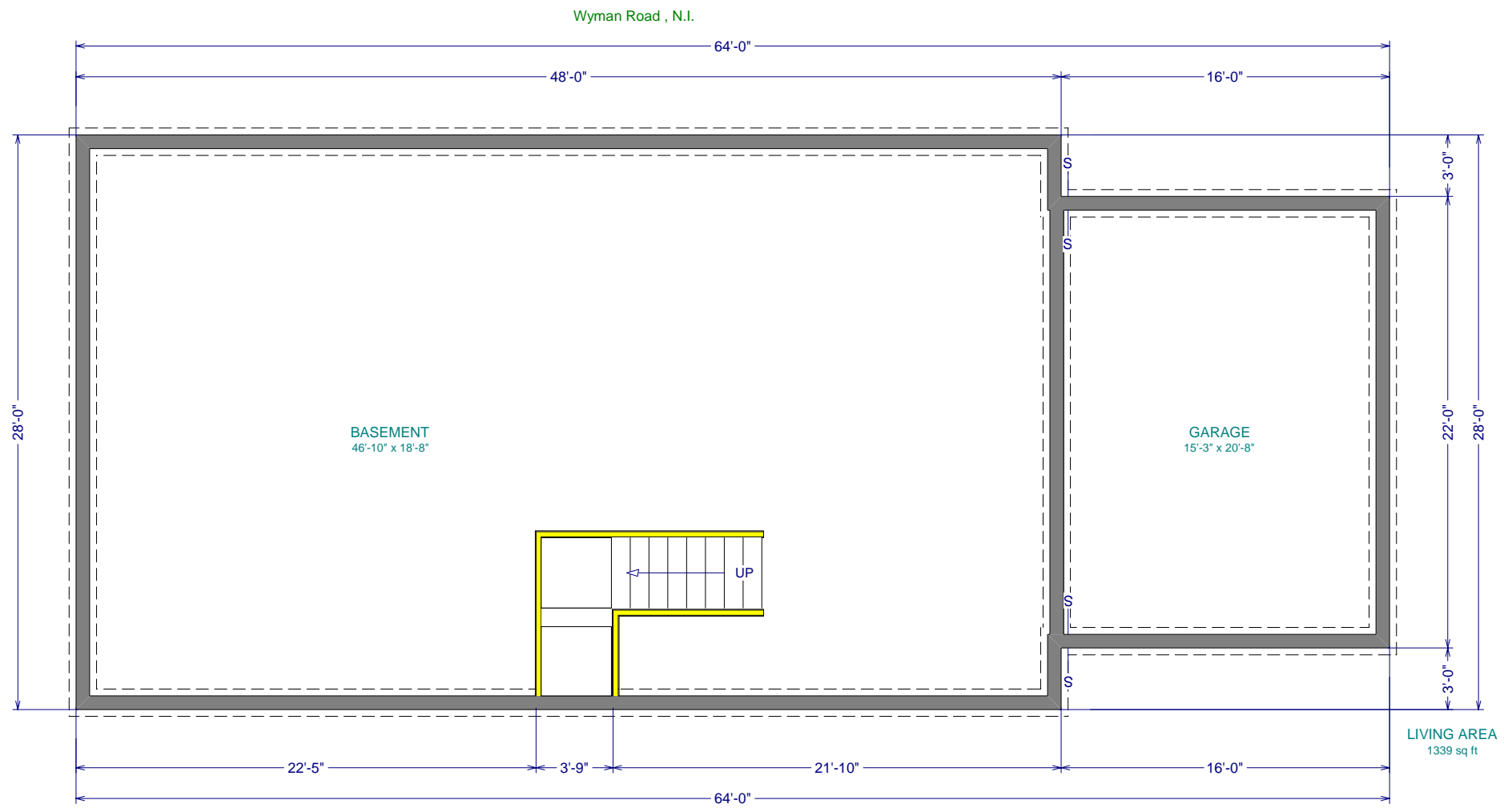
Typical Deck Detail Attached to Concrete Wall



Typical 1 Story Section



8" FOUNDATION - POURED CONC.



REVISIONS:

PROJECT:
 Wyman Rd
 Lot 11-43B
 New Ipswich, NH 03071

DESIGNER:
 Amanda Lehtonen
 San-Ken Homes, Inc.
 New Ipswich, NH 03071
 www.san-ken.com
 (603)878-2856